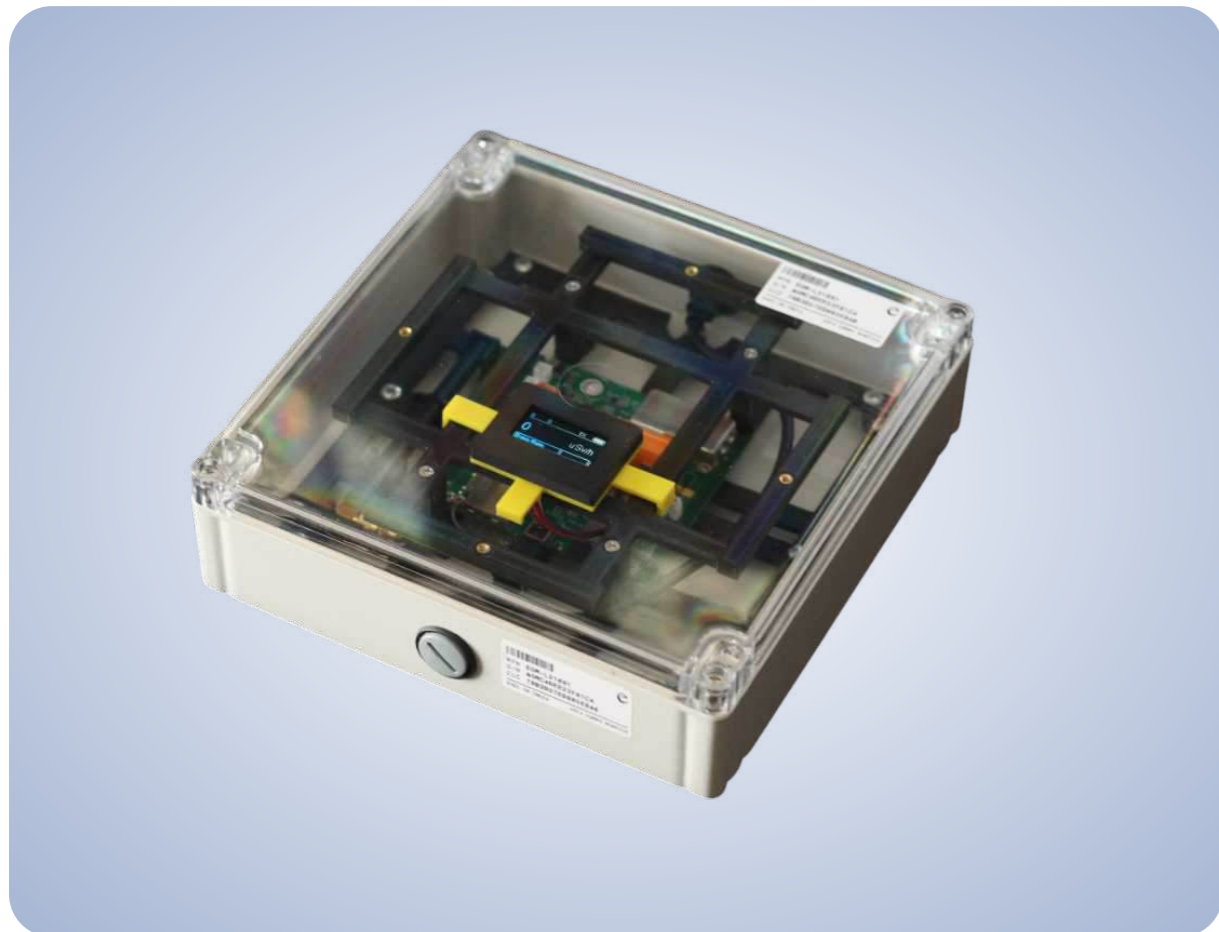
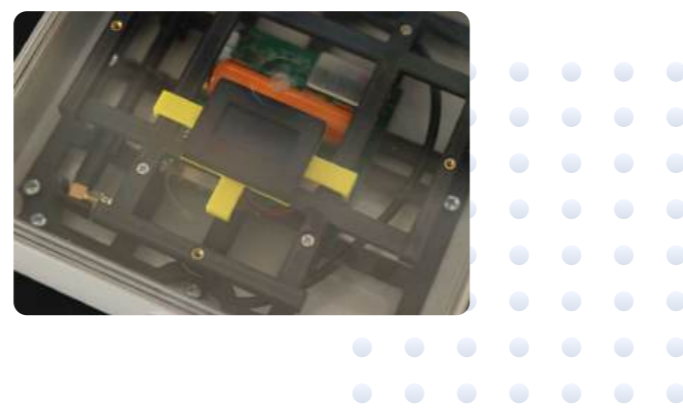


# Area Gamma Monitor

Reliable | Compact | Real-Time Monitoring



Designed for precision indoor radiation monitoring, the EGM-L210X1 Area Gamma Monitor combines reliable detection, robust design, and industrial communication interfaces in a sleek, wall-mounted system. It operates within a 0.01 mR/h to 100 mR/h detection range and supports energy compensated GM tubes or scintillator-based detection. With built-in power backup configuration, it is ideal for healthcare, laboratories, research, and industrial safety applications.



## Specifications

EGM-L210X1

CASTING  
**ABS Plastic**

SENSOR TYPE  
**GM Tube / Scintillator**

DISPLAY  
**1.3" OLED**

CONFIGURATION  
**Wi-Fi AP Mode**

DIMENSIONS  
**~210 x 210 x 60 mm**

DOSE RATE RANGE  
**0.01 mR/h – 100 mR/h**

COMMUNICATION  
**RS-485, ETHERNET**

WEIGHT  
**~800 g**

## Features

### High-Precision Radiation Sensing

Uses the BG51 sensor to measure radiation levels accurately from 1  $\mu$ Sv/h to 50 mSv/h, ideal for safety-critical applications.

### Wall-Powered with Battery Backup

Ensures uninterrupted monitoring during power failures with its internal battery acting as a UPS.

### Compact, Durable Enclosure

Tough ABS body with a polycarbonate lid provides protection against dust, splashes, and harsh environments.

### OLED Display with Real-Time Metrics

Shows dose rate, battery status, TX indicator, and CPS values on a clear 1.3" display.

### Industrial Communication Support

Supports relay outputs, 4–20 mA, RS-485 (Modbus RTU), and Ethernet (Modbus TCP/IP) for seamless system integration.

### Flexible System Integration

Easily integrates with SCADA and monitoring systems for real-time data access and control.