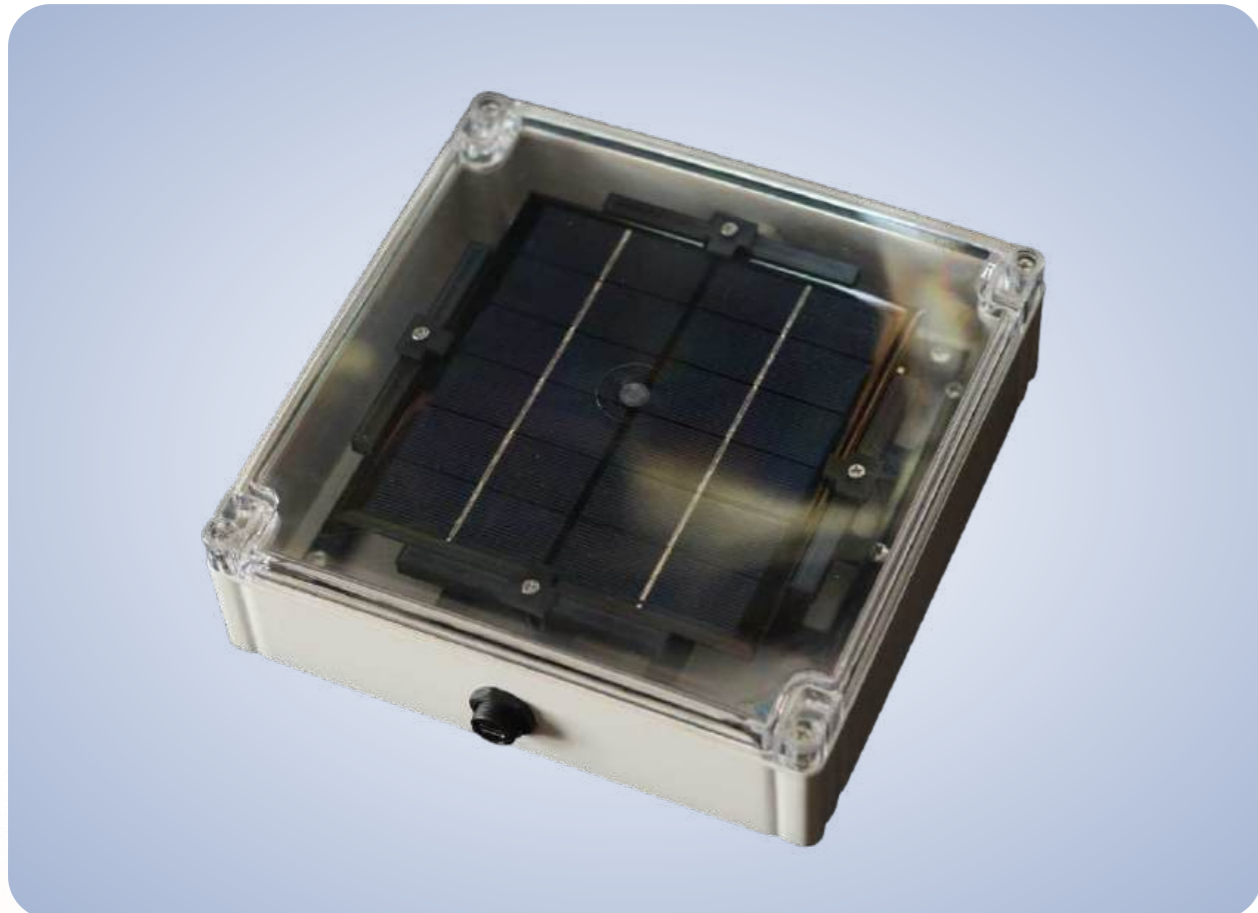


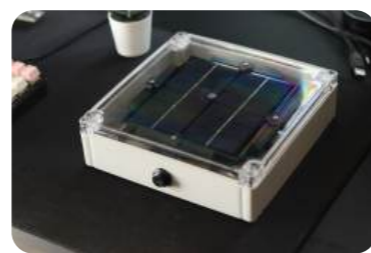
Area Gamma Monitor

Reliable | Compact | Real-Time Monitoring



The EGM-L210Y1 is a compact, solar-powered outdoor Area Gamma Monitor designed for reliable radiation monitoring. Featuring an IP65 enclosure and industrial communication interfaces.

it operates autonomously with minimal maintenance. Its solar panel enables continuous operation, making it ideal for remote and unattended environments.



Specifications

EGM-L210Y1

CASTING

IP65-Rated ABS Plastic

SENSOR TYPE

GM Tube / Scintillator

SOLAR PANEL

6V 500mA / 3W

CONFIGURATION

Wi-Fi AP Mode

TELEMETRY

RS-485, Ethernet

BATTERY

2500mAh Li-ion

DOSE RATE RANGE

0.01 mR/h – 100 mR/h

CHARGING

Type C Port

Features



Solar Powered for Autonomy

Supports a solar panel to eliminate human intervention for charging, offering unlimited battery life under ideal conditions.



Real-Time Dose Rate Monitoring

Monitor AGM data live through a centralized server-based UI, enabling authorized personnel to track real-time dose rate variations and system status remotely.



Remote Calibration Management

Calibration factors can be adjusted remotely via the server for added convenience in outdoor deployments.



Robust Outdoor Enclosure

Features an IP65 enclosure (ABS Base with Polycarbonate Lid) for durability in various environments.



Reliable Continuous Operation

Designed for uninterrupted 24/7 monitoring with stable performance in remote and unattended outdoor environments.



Industrial Communication Support

Supports relay, 4–20 mA, RS-485, and Ethernet for integration with monitoring systems.